



BEAVER DAM UNIFIED SCHOOL DISTRICT **FACILITIES PLANNING**

Community Conversations | 2024

PROJECT TEAM



District Leadership Team

- process guidance
- providing / verifying district data (enrollment, building use, history, curriculum, etc.)
- overall vision



Construction Manager

- cost estimating
- constructability reviews
- management of construction budget
- bidding + management of construction subcontractors



Architect

- overall project design
- project documentation + detailing
- management + coordination of engineering team

LONG TERM DISTRICT FACILITIES PLANNING



- Identification of Special Projects (Urgent Needs)
- Identification of High School Needs

- Middle School Mechanical Systems
- Prairie View Expansion (Consolidation with Trenton)
- High School Science Labs

- High School Addition + Renovation
- Middle School Secure Entry Renovation
- Elementary School Secure Entry Renovations

- Identification of Athletic Needs
- Identification of Elementary Needs

- Jefferson Expansion (Consolidation with South Beaver Dam)
- High School Outdoor Athletics
- ESC Move + Renovation
- Roofing / Miscellaneous Projects

- Identification of needs at the Middle School and Washington Elementary

THE NEXT PHASE

2012
Facility Study

Special Projects

2016
Referendum

2018
Facility Study

5-Year Facility Projects

2022
Facility Study

Washington Updates / Improvements

Middle School
Solution

- Identification of Special Projects (Urgent Needs)
- Identification of High School Needs

- Middle School Mechanical Systems
- Prairie View Expansion (Consolidation with Trenton)
- High School Science Labs

- High School Addition + Renovation
- Middle School Secure Entry Renovation
- Elementary School Secure Entry Renovations

- Identification of Athletic Needs
- Identification of Elementary Needs

- Jefferson Expansion (Consolidation with South Beaver Dam)
- High School Outdoor Athletics
- ESC Move + Renovation
- Roofing / Miscellaneous Projects

- Identification of needs at the Middle School and Washington Elementary

MASTER PLANNING TIMELINE

WINTER 2023			SPRING 2023			SUMMER 2023			FALL 2023		
DEC	JAN	FEB	MAR	APR	MAY	JUN	JUL	AUG	SEPT	OCT	NOV
				Engage District Leadership Team	Approve CM Selection 5/8	Verification of Facilities Assessment	Solutions & Budget Development				
				Engage Financial Partner							
							Engage Community				

WINTER 2024			SPRING 2024			SUMMER 2024			FALL 2024			
DEC	JAN	FEB	MAR	APR	MAY	JUN	JUL	AUG	SEPT	OCT	NOV	
Solutions & Budget Development						Scope Refinement	Adopt Potential Referendum Question					
		Survey Development	Survey Process		Report Survey Results			8/12 Final Resolution Approved by BoE	Public Information Campaign		11/5 Fall Election Day	
Engage Community												



BEAVER DAM MIDDLE SCHOOL



BEAVER DAM UNIFIED SCHOOL DISTRICT
FACILITIES PLANNING



MIDDLE SCHOOL | HISTORY



BUILT: **1922** (as High School)

ADDITIONS: **1964, 1977, 1989, 1997**

EMERGENCY REPAIRS: **2013, 2019**

SITE SIZE: ~**5 ACRES** (3.5 contiguous
- 1.8 acres occupied by building)

STUDENT POPULATION: **700 +/-**

GRADES SERVED: **6-8TH**

BEAVER DAM MIDDLE SCHOOL

EDUCATIONAL ADEQUACY | PROGRAM

SPACE	EXISTING AVERAGE	EXISTING RANGE	PROPOSED STANDARD
Core Classrooms	797 SF	676 – 1,152 SF	1,050 SF
Science Labs*	1,341 SF	1,299 – 1,359 SF	1,300 SF *
Art Rooms	837 SF	685 – 990 SF	1,500 SF
Music Rooms	1,000 – 2,200 SF		1,200-2,800 SF
STEM	769 SF	765 – 773 SF	1,500 SF
Athletic Spaces (Gymnasium)	11,489 SF (dedicated space)		13,200 SF
Tech Ed / Agriculture**	2,430 SF		7,000 SF +**
Library / IMC	5,691 SF		4,450 SF
Main Office + Student Services Suite	3,600 SF		4,000 SF +
Special Education (dedicated space)	5,000 SF		4,100 SF
Student Commons (w/o Kitchen)	7,310 SF (shared / MP space)		7,800 SF
Site Size	5.4 ACRES		27 ACRES

* CURRENT BUILDING IS LESS 2 LABS (4 EXISTING, 6 SUGGESTED)
 ** CURRENT BUILDING ONLY HAS WOOD SHOP, NO AGRICULTURE

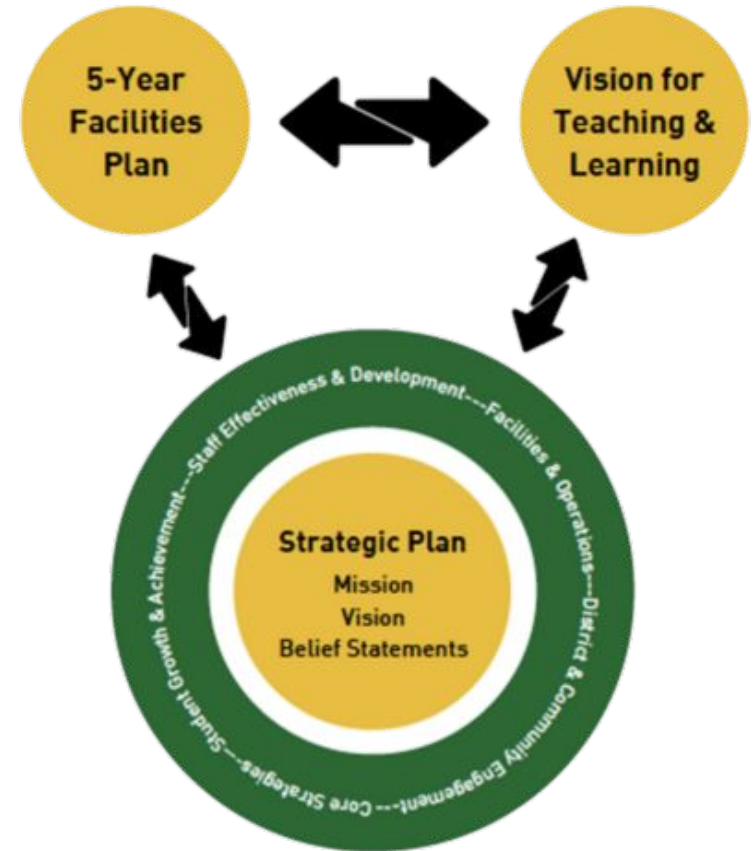


MIDDLE SCHOOL | FUTURE

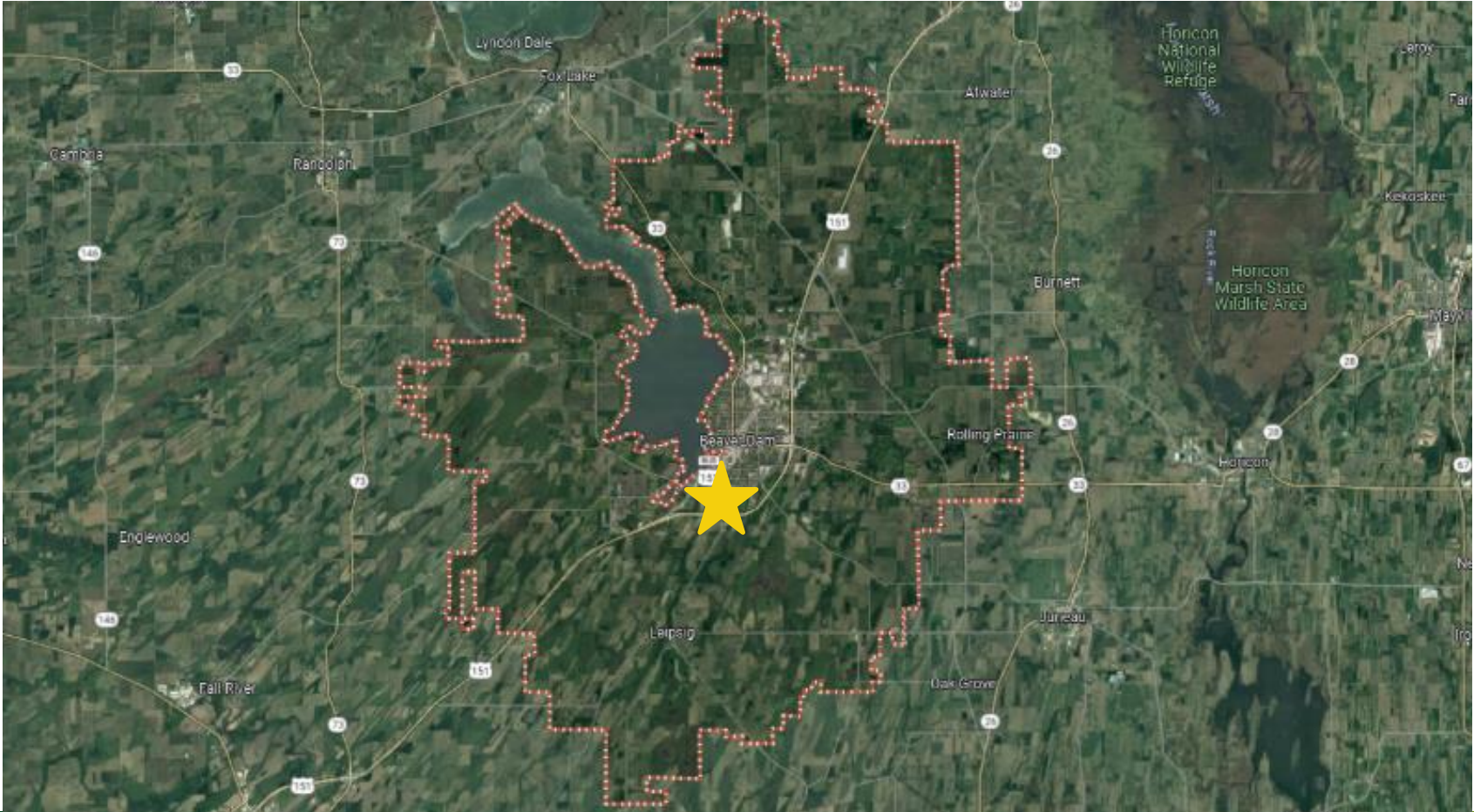
As part of the BDUSD Facilities Plan, the District is exploring options for Middle School replacement

- **Current Middle School building is 100 years old with significant facility needs**
- **Current Middle School site is significantly undersized and landlocked; location between two highways poses safety challenges**

For more information, please see the District literature at <https://tinyurl.com/BDFacilityPlan>



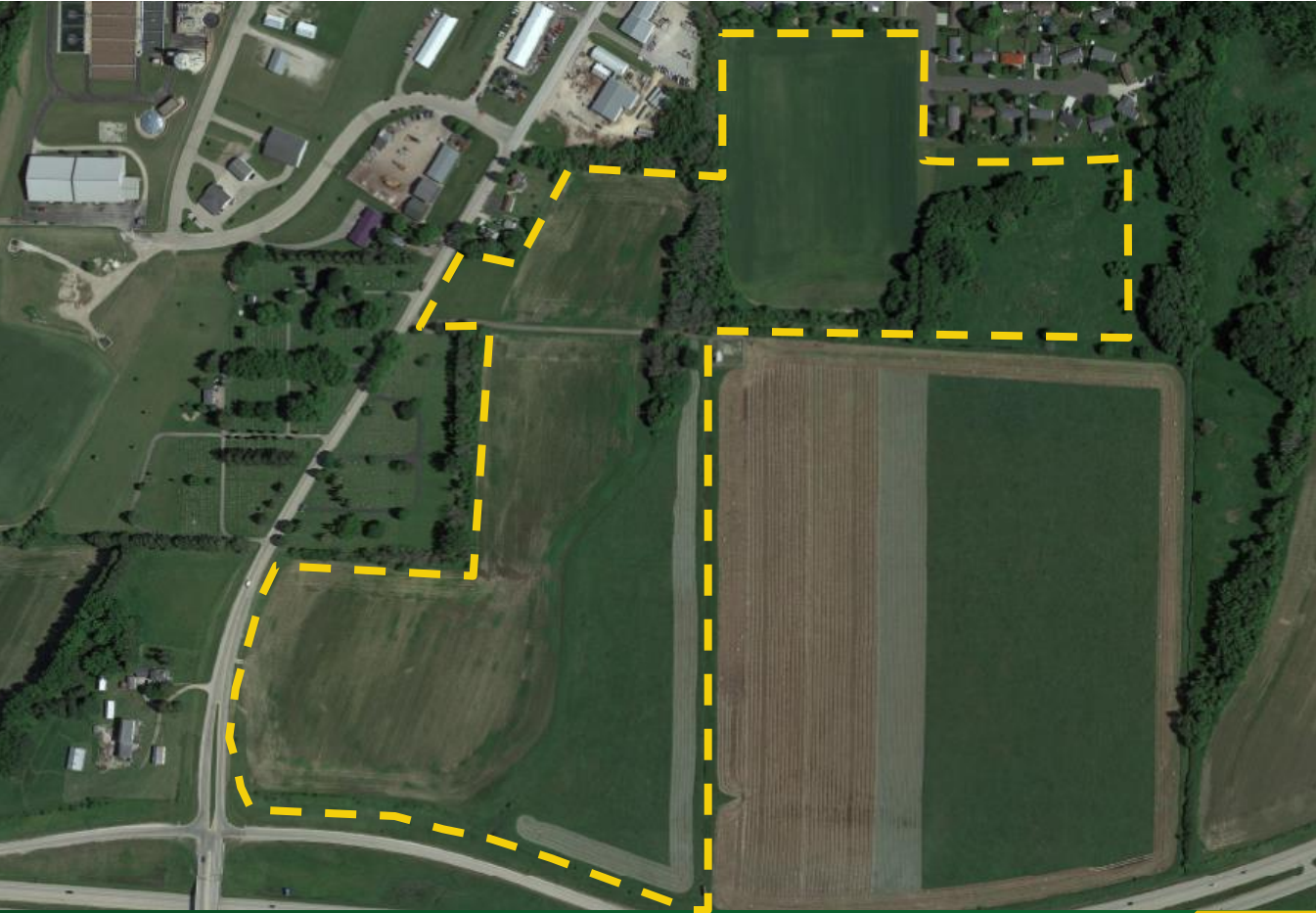
BD MIDDLE SCHOOL – POTENTIAL NEW SITE



BD MIDDLE SCHOOL – POTENTIAL NEW SITE



BD MIDDLE SCHOOL – POTENTIAL NEW SITE



BD MIDDLE SCHOOL – NEW CONSTRUCTION



BD MIDDLE SCHOOL – NEW CONSTRUCTION



BD MIDDLE SCHOOL – NEW CONSTRUCTION

FUTURE SITE EXPLORATION



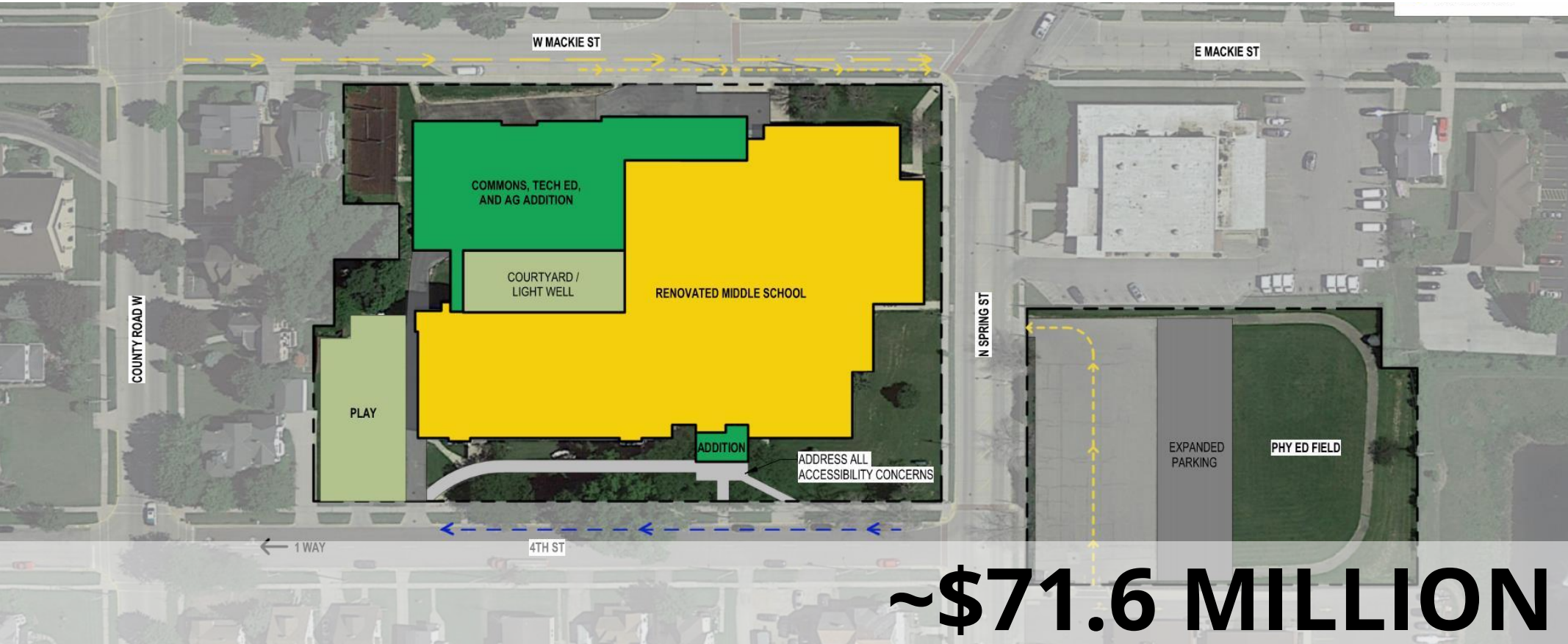
BD MIDDLE SCHOOL - CAPITAL IMPROVEMENTS



~\$20 MILLION



BD MIDDLE SCHOOL – RENOVATION



~\$71.6 MILLION

BD MIDDLE SCHOOL – NEW CONSTRUCTION



~\$87 MILLION



BDMS CAPITAL PROJECT COST RECAP



BASIC CAPITAL IMPROVEMENTS:

~\$20 MILLION

(does not address instructional spaces or campus/site challenges)

COMPREHENSIVE RENOVATION:

~71.6 MILLION

(does address instructional spaces, but does not improve the campus/site realities)

NEW MIDDLE SCHOOL:

~87 MILLION

(addresses instructional spaces and campus/site challenges)

DISCUSSION PROMPT

Do you agree the District should explore building a new middle school in lieu of continuing to invest in the existing middle school building?



WASHINGTON ELEMENTARY



WASHINGTON | HISTORY



BUILT: 1949

ADDITIONS: 1959, 1997

SITE SIZE: 6.3 ACRES

STUDENT POPULATION:

- **200 +/- (Currently at Washington)**
- **100 +/- (Currently at Wilson)**

GRADES SERVED: K-5TH



WASHINGTON | FUTURE

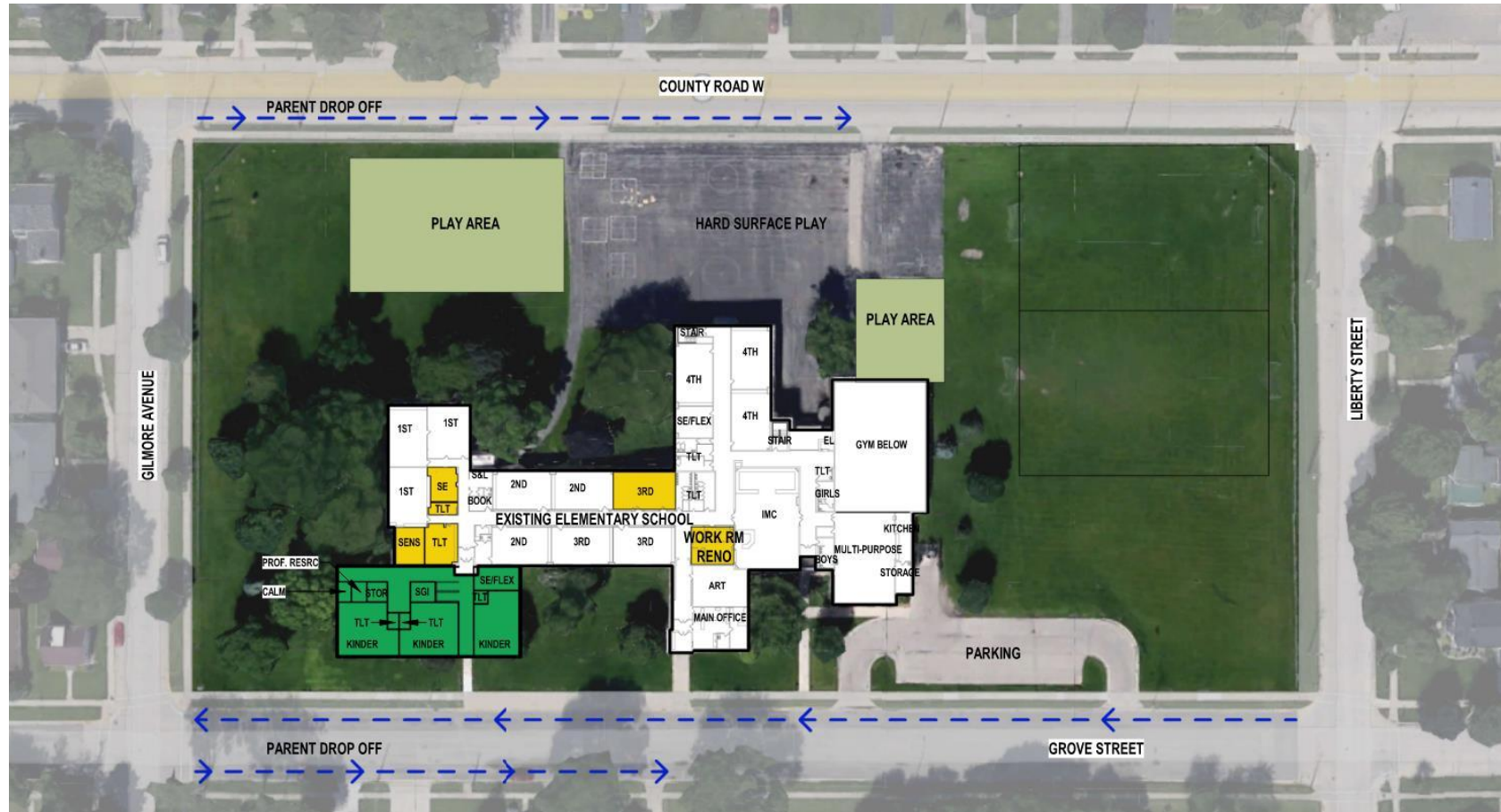
As part of the BDUSD Facilities Plan, the District is committed to a 3 section elementary school at Washington with the addition of Wilson students

- **Fall 2024** – K5 Wilson students start at Washington
- **Summer 2025** – Phase I Construction at Washington
- **Fall 2025** – All Wilson students start at Washington
- **Summer 2026/Beyond** – Opportunity for Washington Phase II with Community support

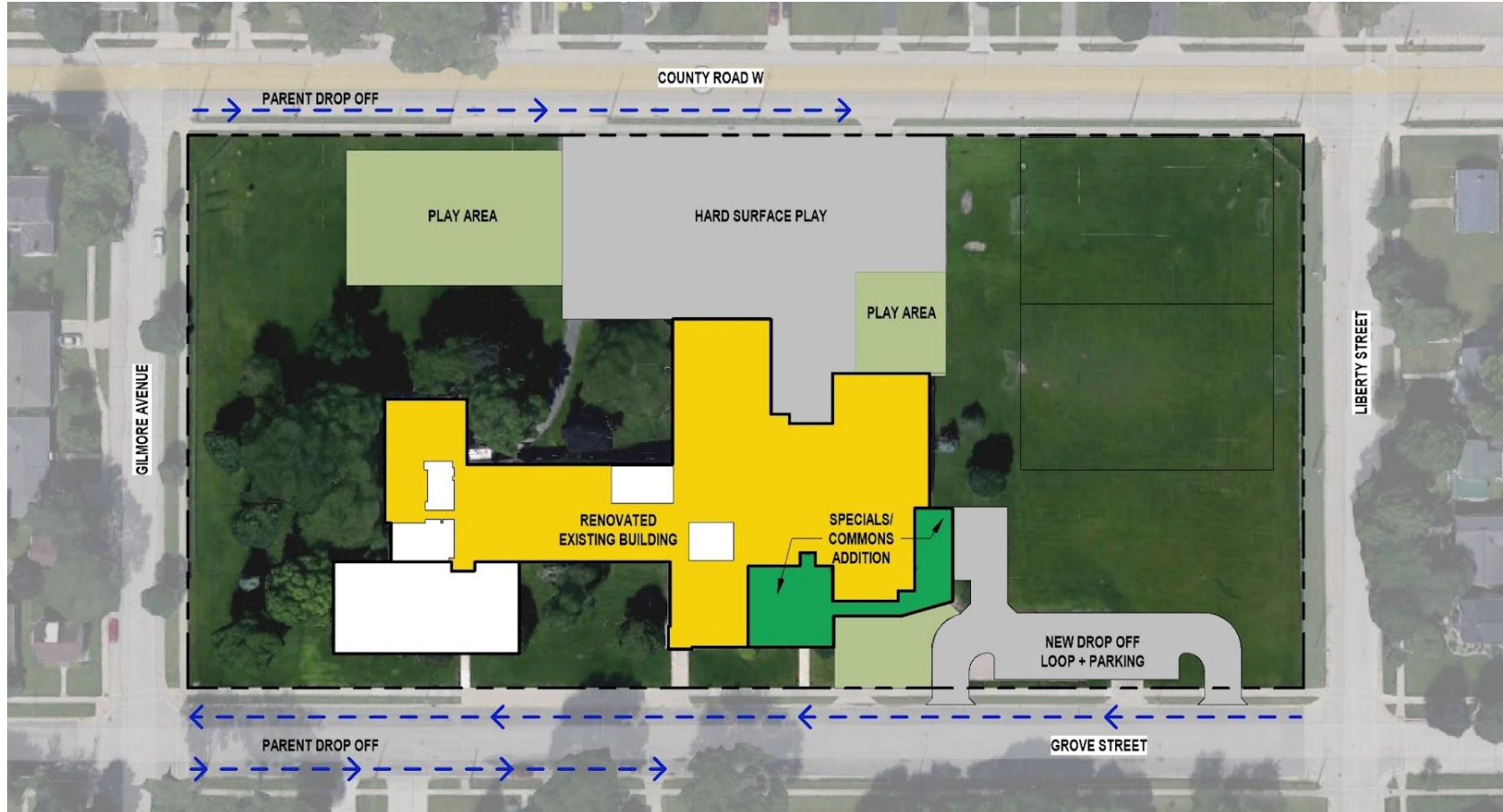
For more information, please see the District literature at <https://tinyurl.com/WashingtonWilson>



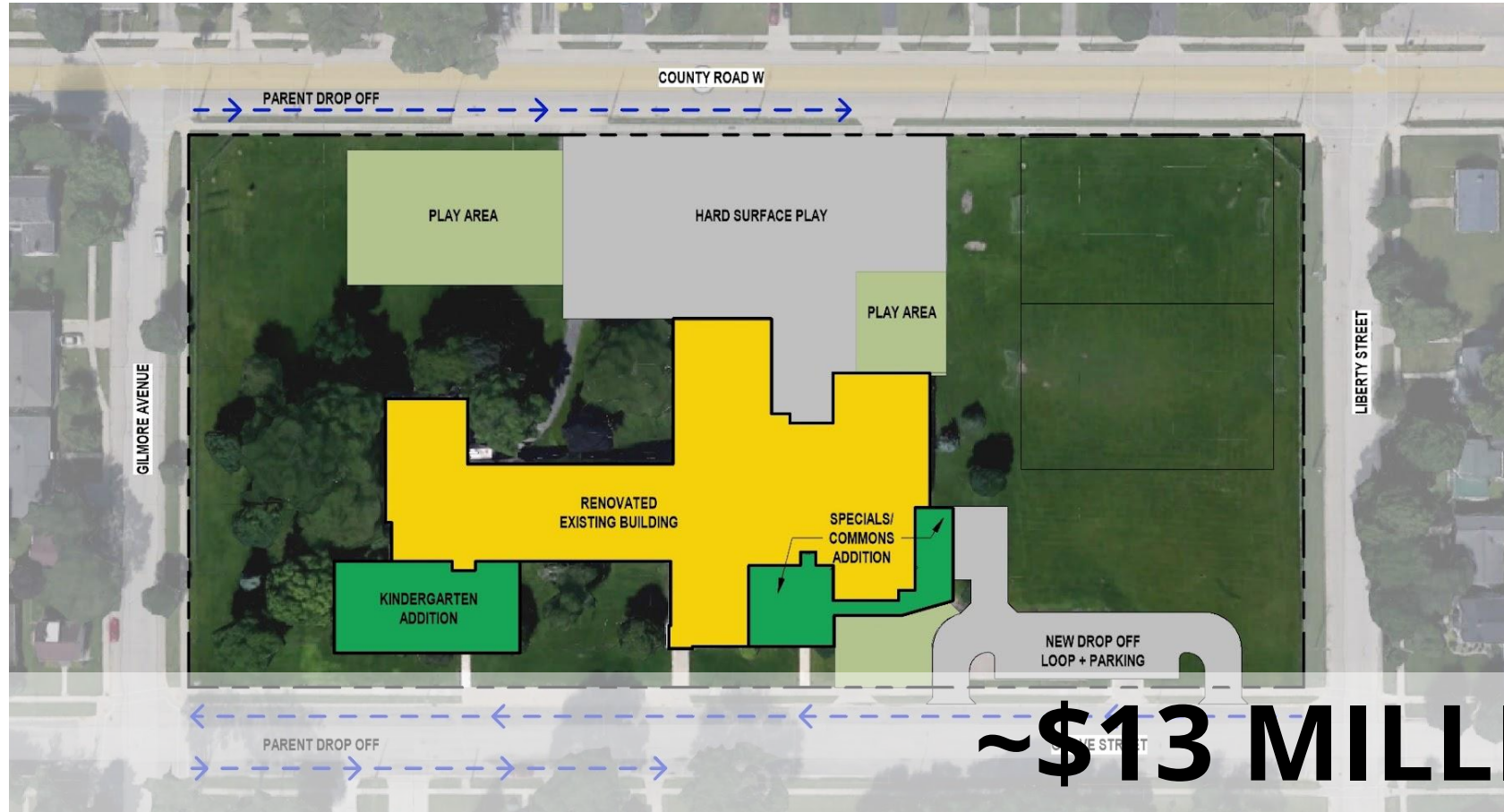
WASHINGTON ELEMENTARY - PHASE I



WASHINGTON ELEMENTARY - PHASE II



WASHINGTON ELEMENTARY



DISCUSSION PROMPT

Are you supportive of ongoing investments at the Washington campus? Why or why not?





DISTRICT-WIDE IMPROVEMENTS



BEAVER DAM UNIFIED SCHOOL DISTRICT
FACILITIES PLANNING



DISTRICT-WIDE IMPROVEMENTS

- Playground Improvements
- Drop-off / Pick-up Improvements
- Site Safety (Circulation + Fencing)
- Community Recreation
- ADA Access



~\$7 MILLION

DISCUSSION PROMPT

What are additional District-wide priorities that could benefit our school sites and enhance the community's experience?



COMMUNICATIONS PLAN



BEAVER DAM UNIFIED SCHOOL DISTRICT
REFERENDUM COMMUNICATION SCHEDULE
NOVEMBER 2024

TOOLS	APRIL			MAY				JUNE					JULY				AUGUST				SEPTEMBER					OCTOBER			NOV.	
	14	21	28	5	12	19	26	2	9	16	23	30	7	14	21	28	4	11	18	25	2	9	15	22	29	6	13	20	27	5
LRFP Logo Identity																														
LRFP Key Messages																														
LRFP Webpage																														
Survey Process																														
Survey Results																														
Publicize Referendum Question																														
First Day of 2024/25 School Year																														
Referendum Logo/Campaign																														
Powerpoint																														
Videos																														
Referendum Website																														
Boards/Posters, Digital Displays																														
FAQs																														
Fact Sheet																														
Direct Mail																														
Public Information Nights (dates TBD)																														
Article in Any Local Publication																														
Backpack Stuffers																														
Civic Presentations																														
Facebook/Social Media																														
Email Blasts																														
Absentee Voting																														
Referendum Vote																														



QUESTIONS?

STAY CONNECTED!

 WWW.BDUSD.ORG

 FACEBOOK.COM/BDUSD

 @BEAVERDAMUSD